

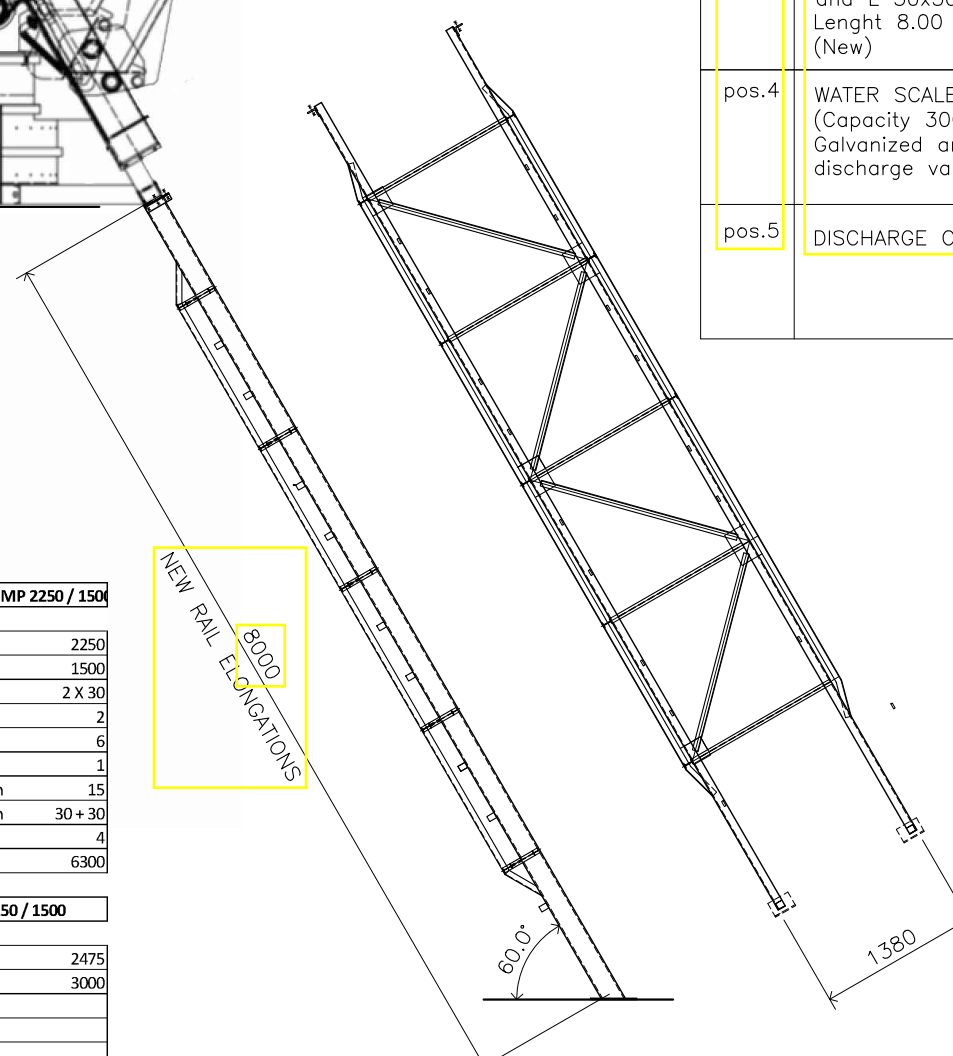
Technical data counterflow mixer SICOMA MP 2250 / 1500

Dry filling capacity	Ltr	2250
Compacted fresh concrete	Ltr	1500
Mixer drive motor size	kW	2 X 30
Mixing stars	N°	2
Mixing shovels	N°	6
Side scrapers	N°	1
Speed of rotor	Upm	15
Speed of mixing stars	Upm	30 + 30
Hydraulic power pack motor	kW	4
Weight of mixer	Kg	6300

Technical data of skip-hoist SICOMA MP 2250 / 1500

Dry filling capacity	Ltr	2475
Max. filling weight	Ltr	3000
Skip-hoist motor size	kW	
Speed of hoist up/down	m/s	
Diameter of hoist cable	mm	
Weight of skip-hoist	kg	2100

NEW RAIL ELONGATIONS
8000



pos.1	MIXER MP 2250/1500 With one discharge gate Hydraulically operated (2nd hand-regenerated)
pos.2	SKIP-HOIST including hopper, support frame on mixer and electromechanical parts (2nd hand-regenerated)
pos.3	RAIL ELONGATIONS Realized with UNP 180 profiles and L 50x50x5 steel frame Lenght 8.00 mt (New)
pos.4	WATER SCALE (Capacity 300 L) Galvanized and complete with discharge valve
pos.5	DISCHARGE CHUTE

Technical sheet used mixer sicOMA 2250/1500 with skip-hoist, water scale and discharge chute:

Serial number:		
Construction year:	2002	
Bottom wearing plates:	HARDOX 400	New
Side wearing plates:	CHROMIUM CARBIDE CLAD PLATES	Used (tickness 10 mm)
Mixing shovels:	Ni-Hard iron, 550 HB minimum	New
Side scrapers:	Ni-Hard iron, 550 HB minimum	New
Skip-hoist rope:	Acciao AR Ø 11	New
Hydraulic cylinder:		New
Gear-box:	MP 1500	Regenerated and painted
Mixing-box:	MP 1500	Regenerated and painted
Skip-hoist support frame:	MP 1500	Regenerated and painted
Skip-hoist hopper :	MP 1500	Regenerated and painted
Electrical wiring and limit switches:		



Dacem s.r.l. - Viale Udine, 46 - 30026 Portogruaro (VE) - ITALY
Tel: +39-0421-75435 , Fax: +39-0421-282360
E-Mail: dacemsrl@gmail.com

Date: 18.09.17 Code: MP 2250 / 1500